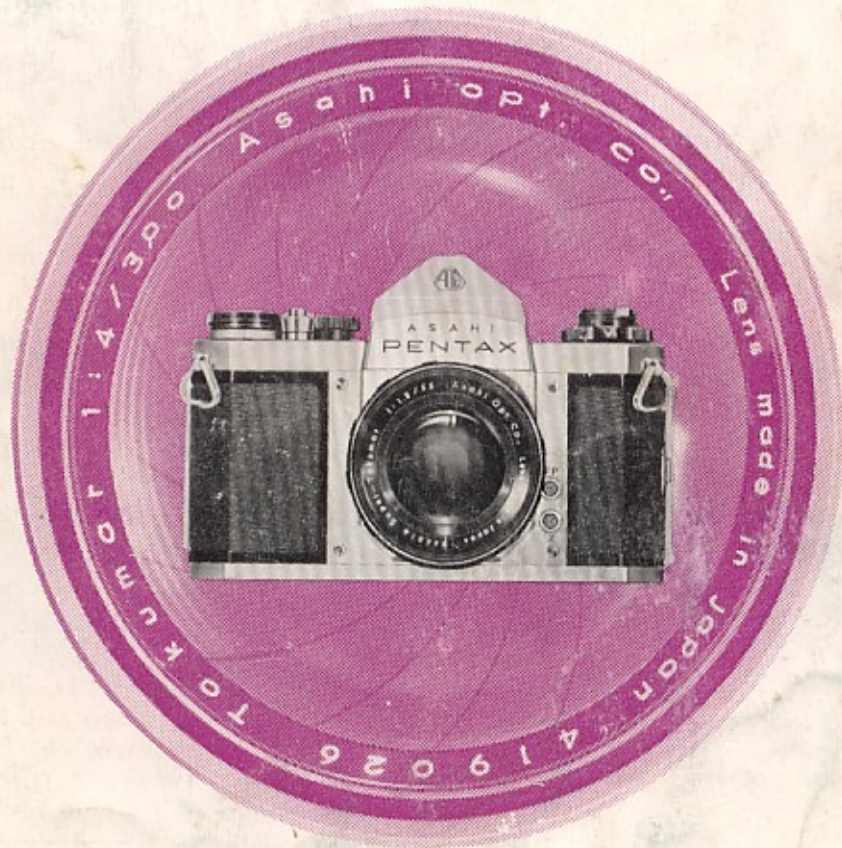


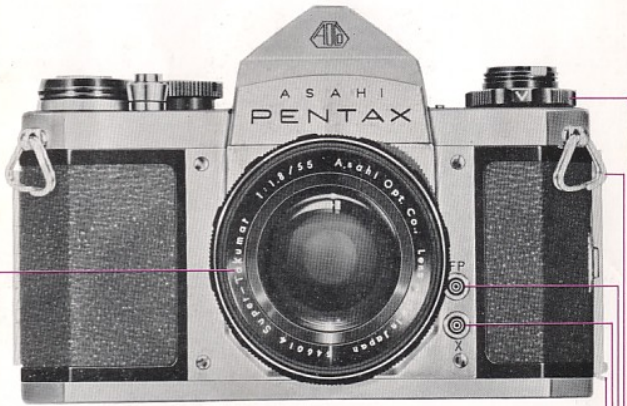
# ASAHI PENTAX SV







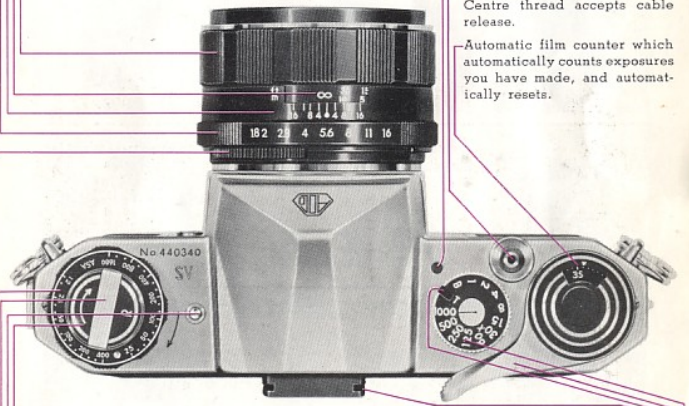
**The ASAHI PENTAX SV ...**  
**... the camera to use and enjoy and treasure**  
**for a lifetime of photographic satisfaction.**



Razor-sharp, fully corrected, 6-element Super-Takumar 55mm f/1.8 or f/2 lens, with threaded lens mount compatible with many other single-lens reflex cameras. See more data on pages 5/6.

Back lock for hinged camera back for easy film loading and unloading.  
 X flash terminal for electronic flash.  
 FP flash terminal for focal plane lamps.  
 D-ring for leather strap.  
 Self-timer cocking knob.

Depth-of-field preview lever which affords visual check of depth of field.  
 Diaphragm setting ring.  
 Depth-of-field guide on both sides of distance and diaphragm index.  
 Distance scale from 45cm (1.5') to infinity.  
 Focusing ring. *The action of this black anodized mount is silky. It's like a hot knife cutting through butter.*



Film rewind knob.  
 Tiny self-timer release button.  
 Rapid rewind crank which unfolds to crank position for speedy film rewind.  
 Film type reminder dial, colour coded for black-and-white and colour films.

Cocked indicator which shows red when the shutter is cocked.  
 Smooth shutter release button. Centre thread accepts cable release.  
 Automatic film counter which automatically counts exposures you have made, and automatically resets.  
 Viewfinder frame accepts Asahi Pentax Meter and accessory clip.  
 This slot engages the coupling pin of the Asahi Pentax Meter.  
 Rapid wind lever which cocks shutter, advances film, charges instant return mirror and turns Cocked Indicator to red with one single stroke.  
 Single, non-rotating shutter speed dial: 1 - 1/1000 sec., plus Time and Bulb, fully couple with Asahi Pentax Meter.

**The Best Camera Value in the World Today.**



**Fully automatic, instant reopen diaphragm, and depth-of-field preview lever.**

The diaphragm of the Super-Takumar lens is always fully open, and the image of your subject is always bright, making your viewing and focusing far easier. Set the diaphragm ring of the lens to your desired opening... depress the shutter release... the diaphragm instantly closes down to the pre-selected aperture and then fully reopens. Move down the depth-of-field preview lever, and the diaphragm manually closes down to the pre-determined aperture... you can check the depth of field before you release the shutter.

**Easiest-to-see life-size viewfinder.**

Thanks to the precision workmanship and unique coating of the Asahi Pentax pentaprism, the finder is one of the easiest and brightest to see from the centre to the edge. The magnifier of the viewfinder is of a retro-focus type, which lets you see your subject in its life size with the standard lens. You may open your left eye while viewing and focusing with your right eye! With a telephoto lens, your image is much bigger - far easier to bring it into focus - than what you see through a finder which shows the image smaller than its life size.

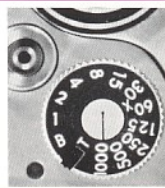


**Accurate and instant-focus cross microprism Fresnel lens.**

Because of the cross microprism centre of the Fresnel lens in the Asahi Pentax viewfinder system, the image of your subject is broken up as illustrated by this picture when your subject is not in focus. When it comes into focus, the Fresnel screen snaps into a brilliant, clearly defined image as shown by the above picture. No camera has a finer focusing screen!

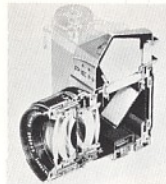
**Focal plane shutter and single shutter speed dial.**

With the Asahi Pentax which has a focal plane shutter, you can use many lenses from wide angle to a 1000mm super-telephoto lens, as well as micro- and macrophotographic accessories... without the necessity of using a special finder. No matter what wide angle or telephoto lens, what micro- or macrophotographic accessory you use, you see exactly what your film takes... without parallax. Shutter speeds from 1 to 1/1000 sec., plus T and B are equidistantly scaled on a single dial, which couples with the Asahi Pentax Meter.



**Built-in and Hidden-in self-timer.**

The self-timer is unusually located, with its cocking knob underneath the film rewind knob. A tiny release button is located beside the cocking knob. You simply turn the cocking knob clockwise until it stops, then depress the self-timer release button... the shutter will be released in about 10 seconds. No plunger lever on the front side of the camera body!



**Instant return mirror.**

Because of the Asahi-invented instant return mirror, the viewfinder of your Asahi Pentax is not blacked out when you release the shutter. Upon releasing the shutter, the instant return mirror flips up... the automatic diaphragm of the Super-Takumar lens closes down to the pre-selected aperture... the shutter opens and closes... the mirror returns and the automatic diaphragm fully reopens to the bright viewing position... all in one motion.

**CdS clip-on exposure meter.**

The Asahi Pentax Meter simply couples with the shutter speeds of the Asahi Pentax SV. It incorporates an ultra-sensitive, highly reliable and long-lived CdS (Cadmium Sulphide) cell, powered by a 1.3V mercury battery. Unlike selenium cells, the sensitivity of the tiny CdS cell does not depend on the cell surface area. It works consistently over a fantastic range of temperatures. With the convenient battery checker, you can easily check when the battery should be replaced.



**Close-up ease of operation.**



Without an aid of any accessory, the Super-Takumar 55mm lens focuses as close as 45cm (1.5'). Adding extension tubes, or a bellows unit, or a microscope adapter, you can easily focus closer and closer to the intimate world of close-ups, micro- and macrophotography. Yet, you don't need an extra viewfinder, for you see exactly what your film will take.

**Automatic resetting film counter.**

After you load a new film into your camera and take two blank exposures, the film counter automatically comes to "0", indicating that you are ready to take the first picture. After you have exposed all frames, rewind the film and open the camera back, and the counter automatically returns to "-2". It's no longer necessary to manually adjust the film counter of your camera... you just can't adjust it manually... it works automatically.



**Classic, compact and elegant.**

With these versatile and luxurious features, the Asahi Pentax SV is classically designed, small and light in weight, of precise construction, its operation is smooth and flawless... its results superb, even in the hands of the most casual photographer.



## Complete Series of Interchangeable Lenses



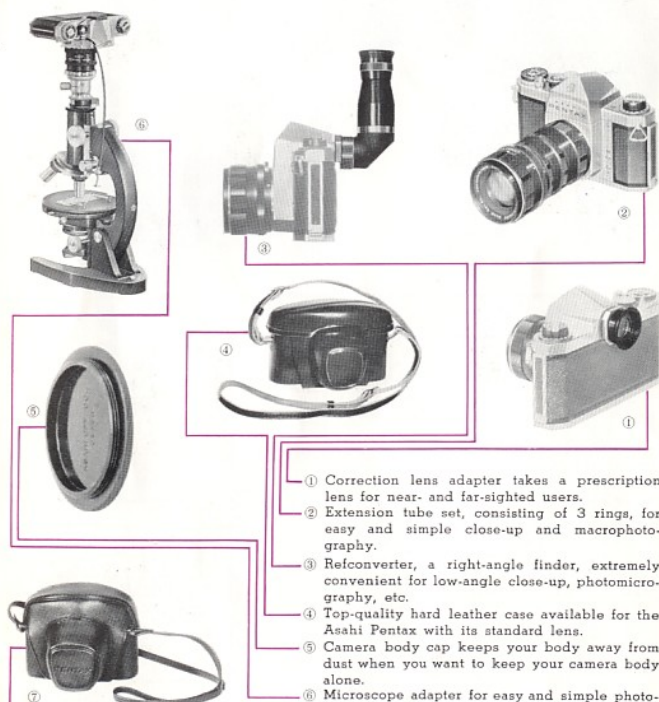
LENSES	DIAPHRAGM	LENS ELEMENT	MINIMUM APERTURE	MINIMUM DISTANCE		ANGLE	WEIGHT		FILTER SIZE		LENSHOOD SIZE	
				Feet	Meters		Ozs.	Gr.	mm	mm		
Auto-Takumar 35mm f/2.3	Semi-automatic	6	f/22	1.5	0.45	63	11	310	65	65		
Auto-Takumar 35mm f/3.5	Semi-automatic	5	f/22	1.5	0.45	63	5.2	147	46	46		
Super-Takumar 55mm f/2	Fully automatic	6	f/16	1.5	0.45	43	7.6	164	49	49		
Super-Takumar 55mm f/1.8	Fully automatic	6	f/16	1.5	0.45	43	7.6	164	49	49		
Auto-Takumar 85mm f/1.8	Semi-automatic	5	f/16	3	0.85	29	12.0	340	55	55		
Takumar 105mm f/2.8	Pre-set	5	f/22	4	1.2	23	10.2	290	49	49*		
Super-Takumar 105mm f/2.8	Fully automatic	5	f/22	4	1.2	23	10.2	290	49	49*		
Takumar 135mm f/3.5	Pre-set	5	f/22	6	2.0	18	10.6	300	46	46		
Auto-Takumar 135mm f/3.5	Semi-automatic	5	f/22	6	2.0	18	11.8	335	49	49		
Takumar 200mm f/5.6	Pre-set	5	f/22	9	2.5	12	13.1	370	49	49*		
Takumar 200mm f/3.5	Pre-set	4	f/22	9	2.5	12	26.5	900	67	*		
Takumar 300mm f/4	Manual	3	f/22	25	7.0	8	48.0	1360	82	*		
Takumar 500mm f/5	Manual	2	f/22	35	10.0	5	6 lbs. 5 ozs.	2850	46	*		
Takumar 1000mm f/8 #	Manual	3	f/22	98	30.0	2.5	42 lbs.	19000	46	*		

(# Supplied with rigid metal tripod.)

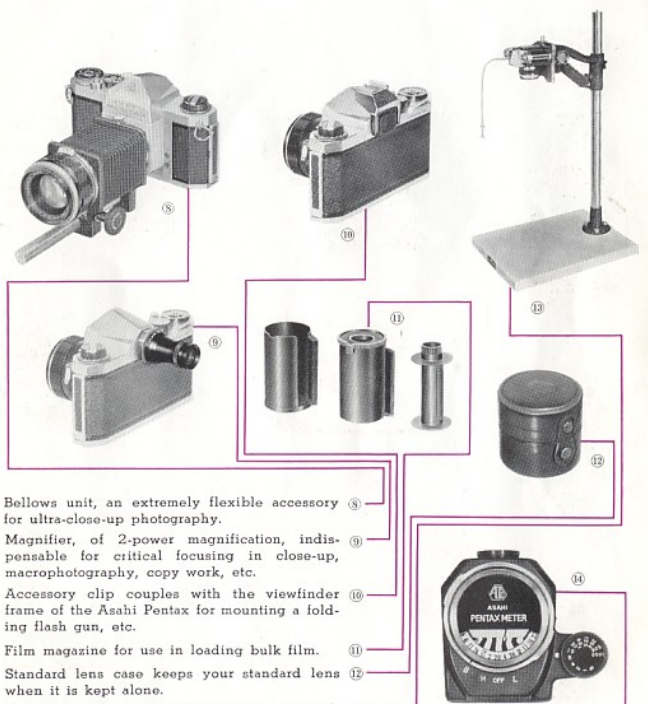
(\* Special lenshoods supplied with these lenses.)



## SUPERB ACCESSORIES



- Correction lens adapter takes a prescription lens for near- and far-sighted users.
- Extension tube set, consisting of 3 rings, for easy and simple close-up and macro photography.
- Refconverter, a right-angle finder, extremely convenient for low-angle close-up, photomicrography, etc.
- Top-quality hard leather case available for the Asahi Pentax with its standard lens.
- Camera body cap keeps your body away from dust when you want to keep your camera body alone.
- Microscope adapter for easy and simple photomicrography.
- Black-finished king-size soft leather case takes your Asahi Pentax with the Asahi Pentax clip-on meter.



- Bellows unit, an extremely flexible accessory for ultra-close-up photography.
- Magnifier, of 2-power magnification, indispensable for critical focusing in close-up, macro photography, copy work, etc.
- Accessory clip couples with the viewfinder frame of the Asahi Pentax for mounting a folding flash gun, etc.
- Film magazine for use in loading bulk film.
- Standard lens case keeps your standard lens when it is kept alone.
- Copy stand for exact and accurate copy work with your Asahi Pentax.
- Ultra-sensitive CdS exposure meter couples with the shutter speeds of your Asahi Pentax. Also see page 4.

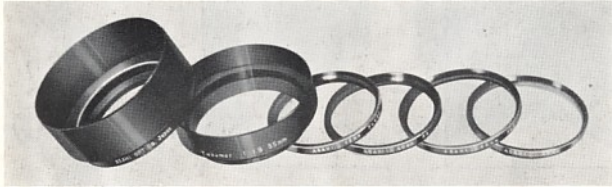






## FILTERS AND LENSHOODS

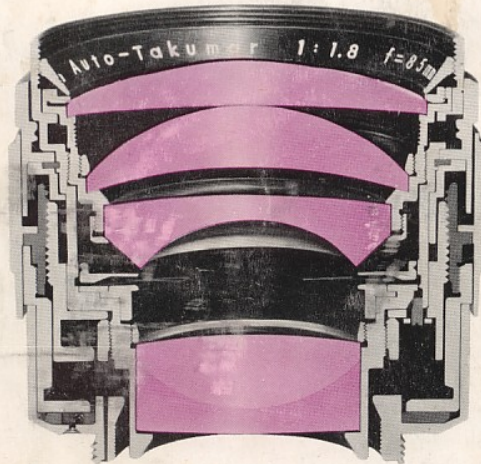
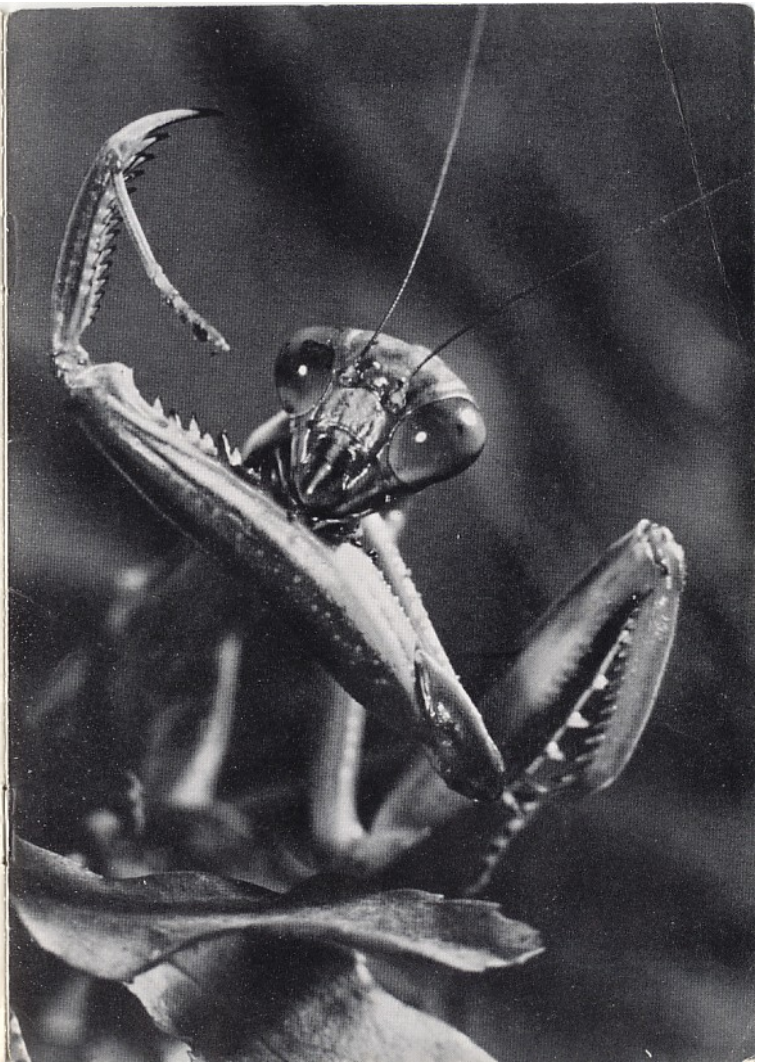
Recommended for use whenever possible to guard against off-angle light rays which cause flare, a lenshood is especially valuable when shooting against the light. Asahi Pentax lenshoods are precision threaded to fit the lens, except for the hoods with adapter ring for the 35mm f/2.3 and f/3.5 lenses, which are of the clip-on type. The sizes of the lenshoods available for Takumar lenses are shown on page 6.



Asahi Pentax filters are precision ground, polished and coated with the same care that goes into the manufacture of the Takumar lenses. You can improve your picture quality by using the Asahi Pentax filters that are made for your Asahi Pentax. As you see from the following table, U.V., Y2, O2 and Skylight filters are available in all sizes, from 46mm to 82mm, and the rest of the filters are available in 46mm and 49mm sizes only.

	EXPOSURE FACTOR	FILTER SIZE							
		46mm	49mm	55mm	65mm	67mm	82mm		
FOR MONOCHROME	UV (Ultraviolet, haze-cutting)	1	•	•	•	•	•	•	
	Y1 (Light yellow)	1.5	•	•	•	•	•	•	
	Y2 (Medium yellow)	2	•	•	•	•	•	•	
	O2 (Light orange)	3	•	•	•	•	•	•	
	YG (Yellow green)	2	•	•					
	R2 (R-60, red)	6	•	•					
FOR DAYLIGHT TYPE REVERSAL COLOUR FILMS	SKYLIGHT	1	•	•	•	•	•	•	For sunlight & skylight.
	CLOUDY	1.5	•	•	•	•	•	•	For open shades, cloudy days and haze.
	MORNING & EVENING	1.5	•	•					For early morning and late afternoon sunlight.
	FLASH	2	•	•					For clear wire-filled flash bulbs.
	FLOOD	3	•	•					For photo studio floods.

All models, prices and specifications are subject to change without notice.



**ASAHI OPTICAL CO., LTD.**

C.P.O. 895, Tokyo, Japan

Printed in Japan.

英語 X-15